

# *e*starling™ TouchConnect Quick Start Guide

## UNPACK THE CONTENTS



Digital Frame



AC Adapter



Stand

Screw the stand into the digital frame clockwise

Plug the AC adapter into a wall jack & into the frame

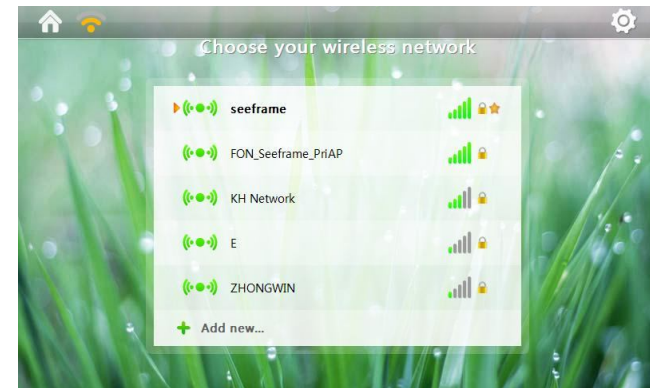
Press the power button on the back of the frame

# *e*starling™ TouchConnect Quick Start Guide

## CONNECT TO THE INTERNET



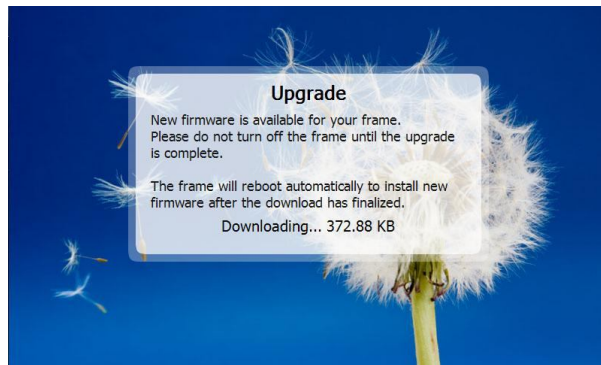
If you plan to use an Ethernet cable instead of a wireless connection, please plug the Ethernet cable into the digital frame and your router/broadband connection.



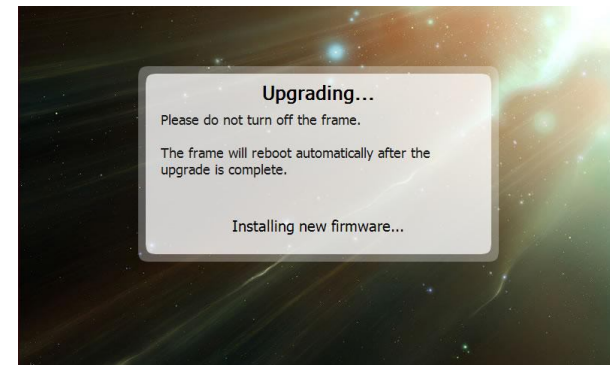
If an Ethernet cable is not connected to your frame, it will automatically scan for a wireless network. Please choose your wireless network and input your password if you enabled password encryption on your router/broadband connection.

# *e*starling™ TouchConnect Quick Start Guide

## OVER-THE-AIR FIRMWARE UPDATE



Once your frame has successfully connected to the internet, it will attempt to upgrade the firmware on your frame. Please do not turn off the frame during the upgrade process.

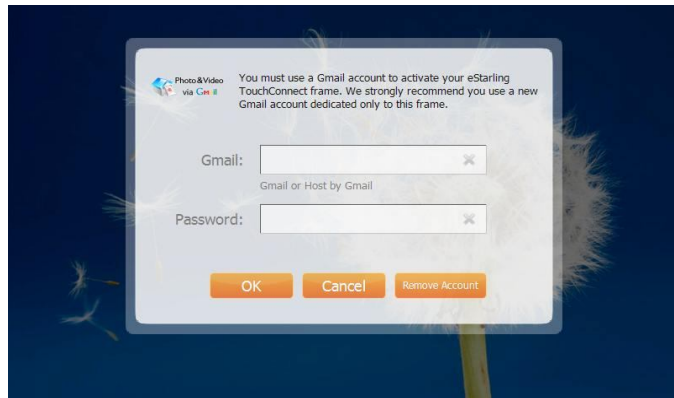


While your frame is upgrading, create a new Gmail™ account on a web browser on your computer or smartphone.

When the firmware upgrade is complete, you will be prompted to enter your Gmail™ user info.

# eStarling™ TouchConnect Quick Start Guide

## SEND PHOTOS TO YOUR FRAME



Please enter the username and password for the Gmail™ account that you would like to associate with the individual frame.



You can now send a photo to your eStarling TouchConnect by attaching the photo to an email and sending it to the Gmail™ account associated with this specific digital frame.